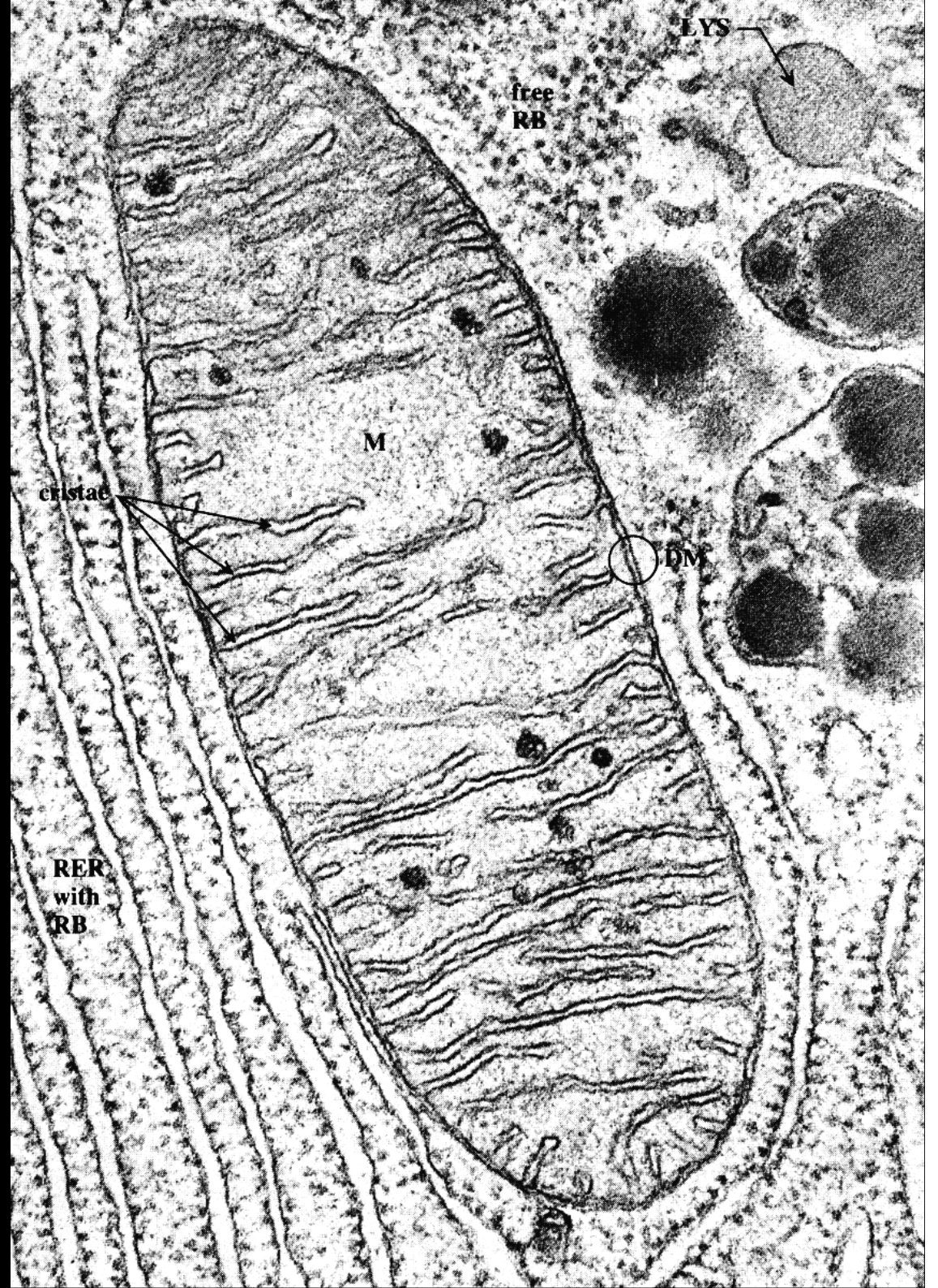
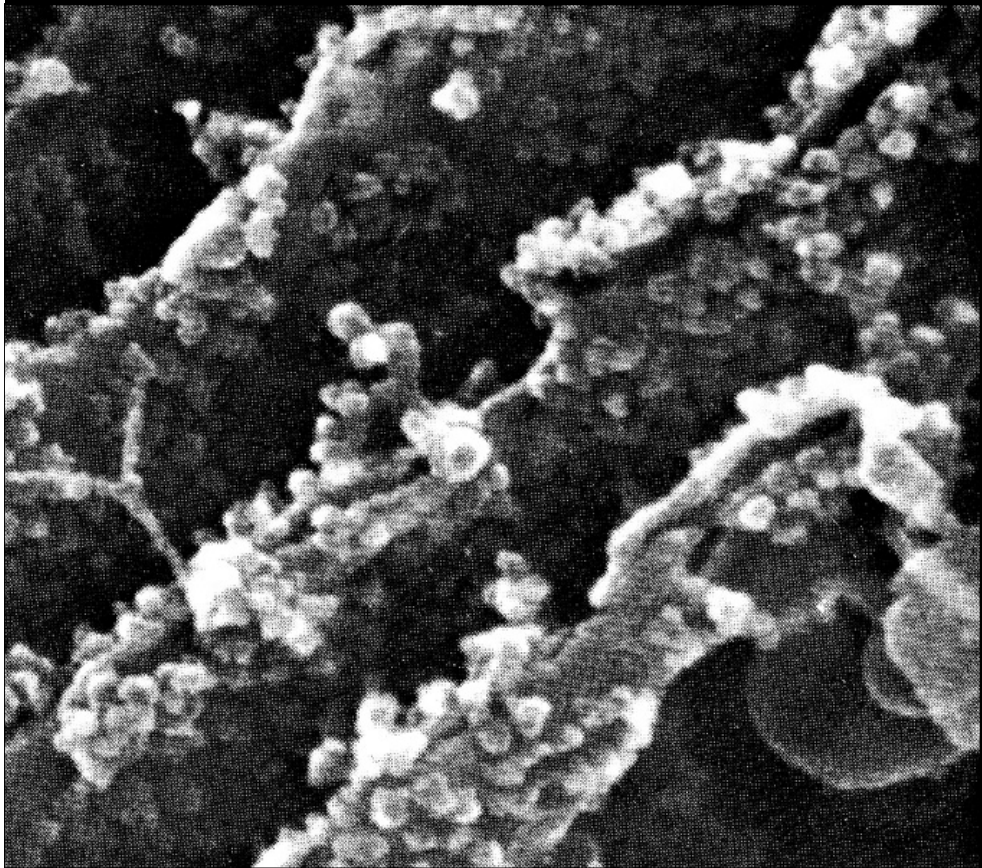
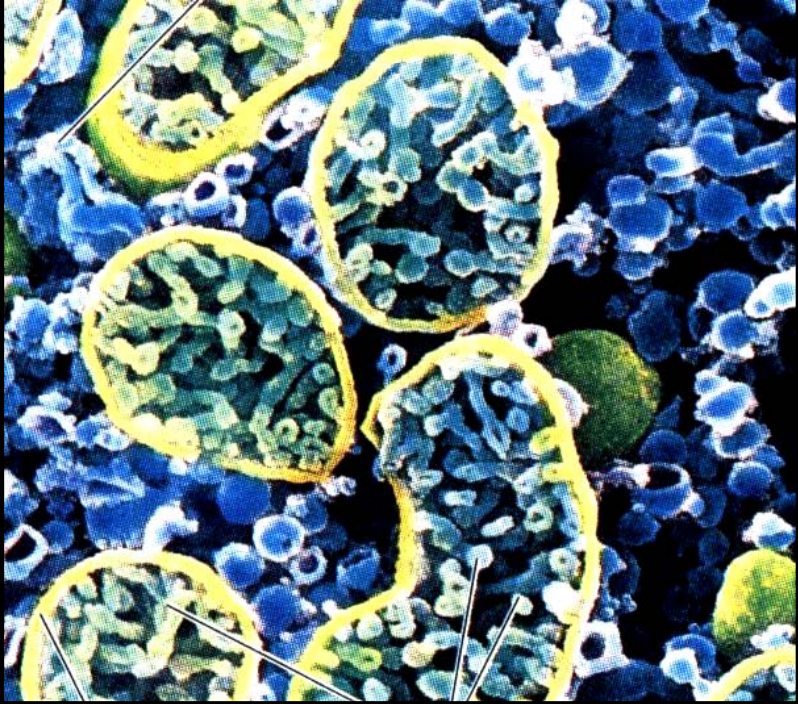
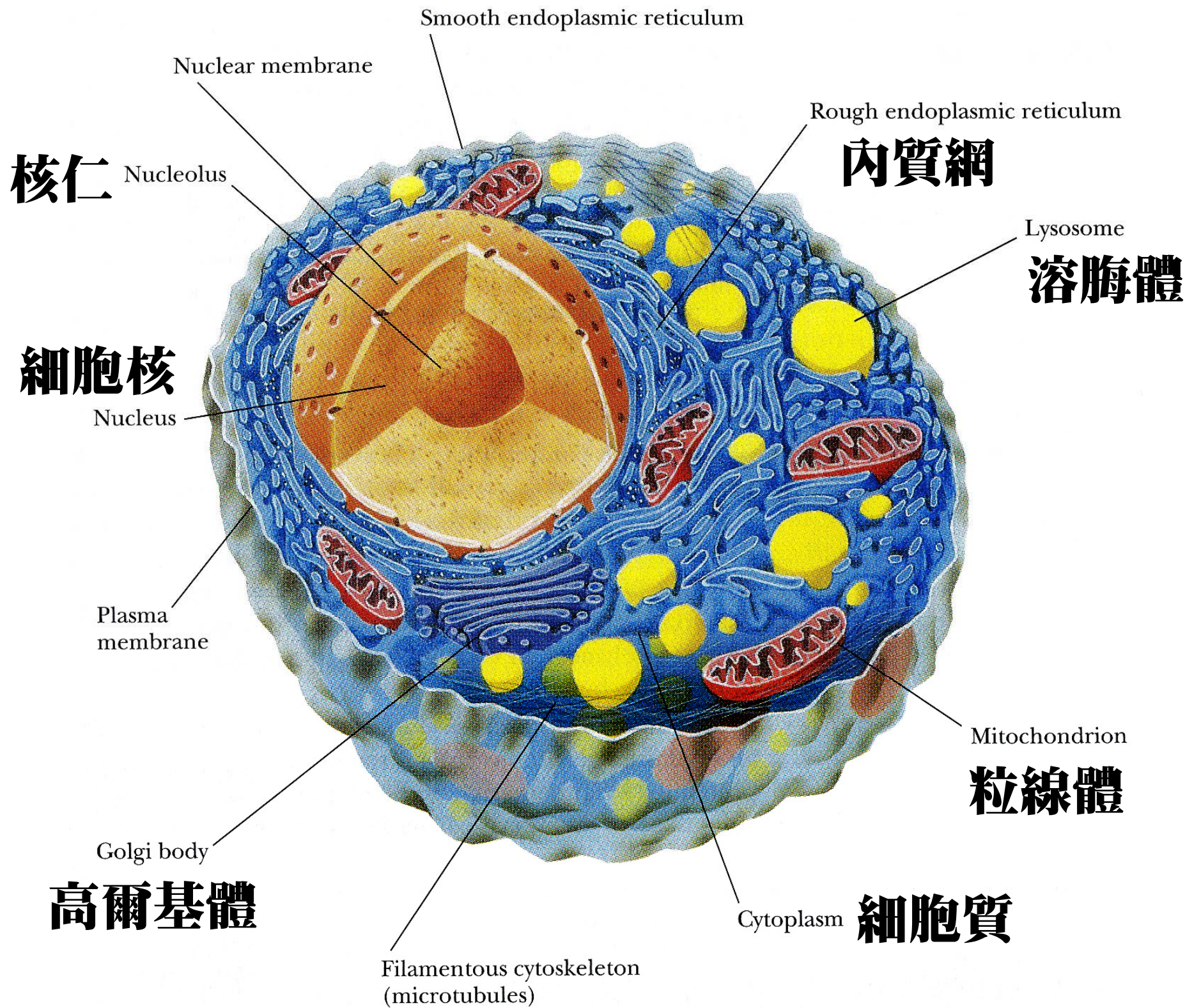


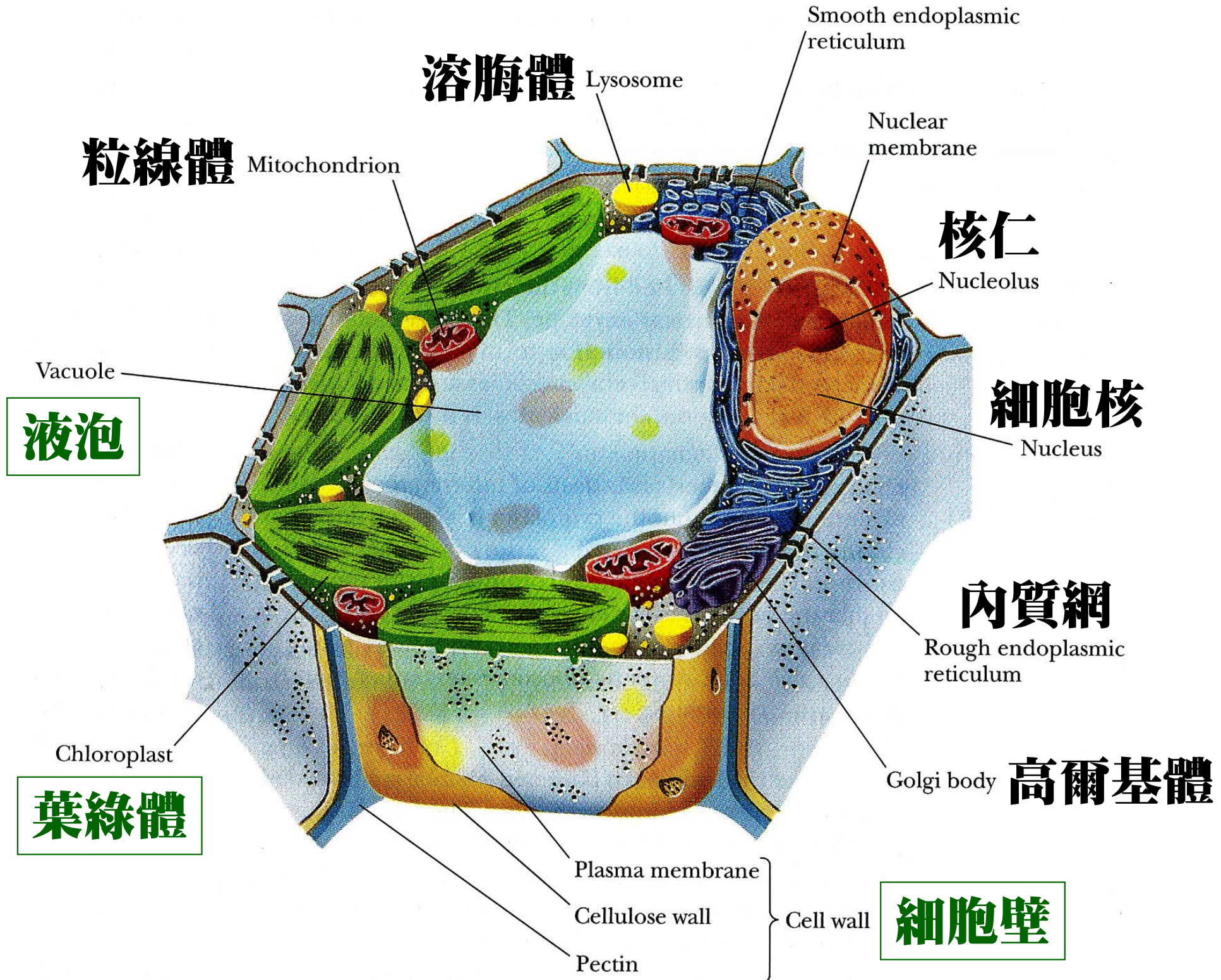
經典之作

細胞核、核仁

粒線體
內質網







溶脢體

Lysosome

Smooth endoplasmic reticulum

粒線體

Mitochondrion

Nuclear membrane

核仁

Nucleolus

Vacuole

液泡

細胞核

Nucleus

內質網

Rough endoplasmic reticulum

Chloroplast

葉綠體

Golgi body **高爾基體**

Plasma membrane

Cellulose wall

Pectin

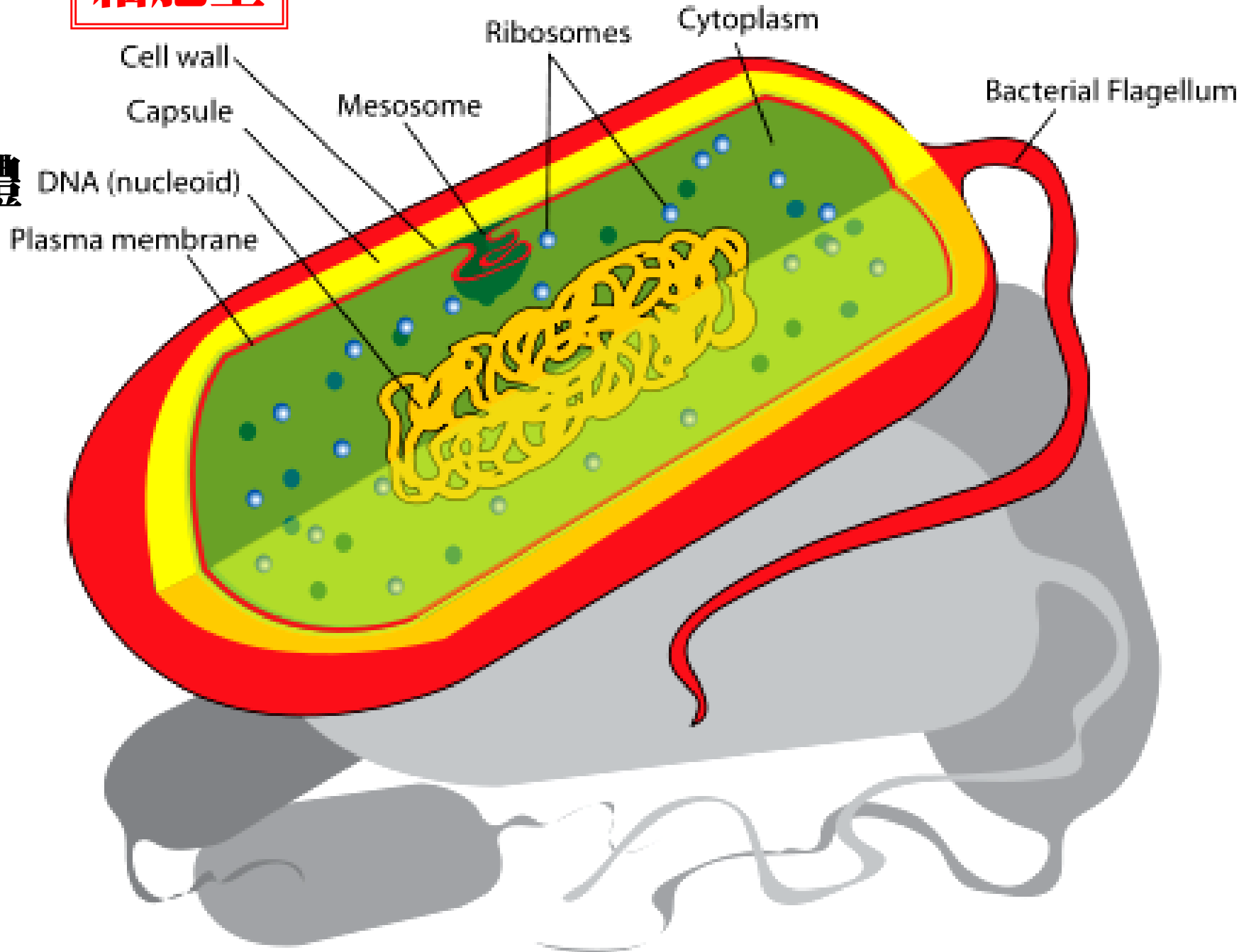
Cell wall

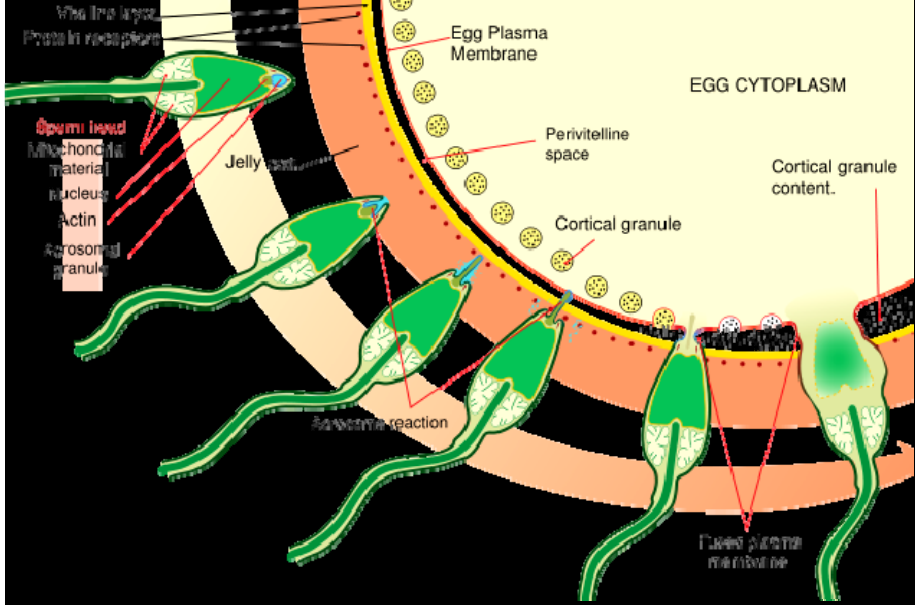
細胞壁

細胞壁

細胞質

染色體



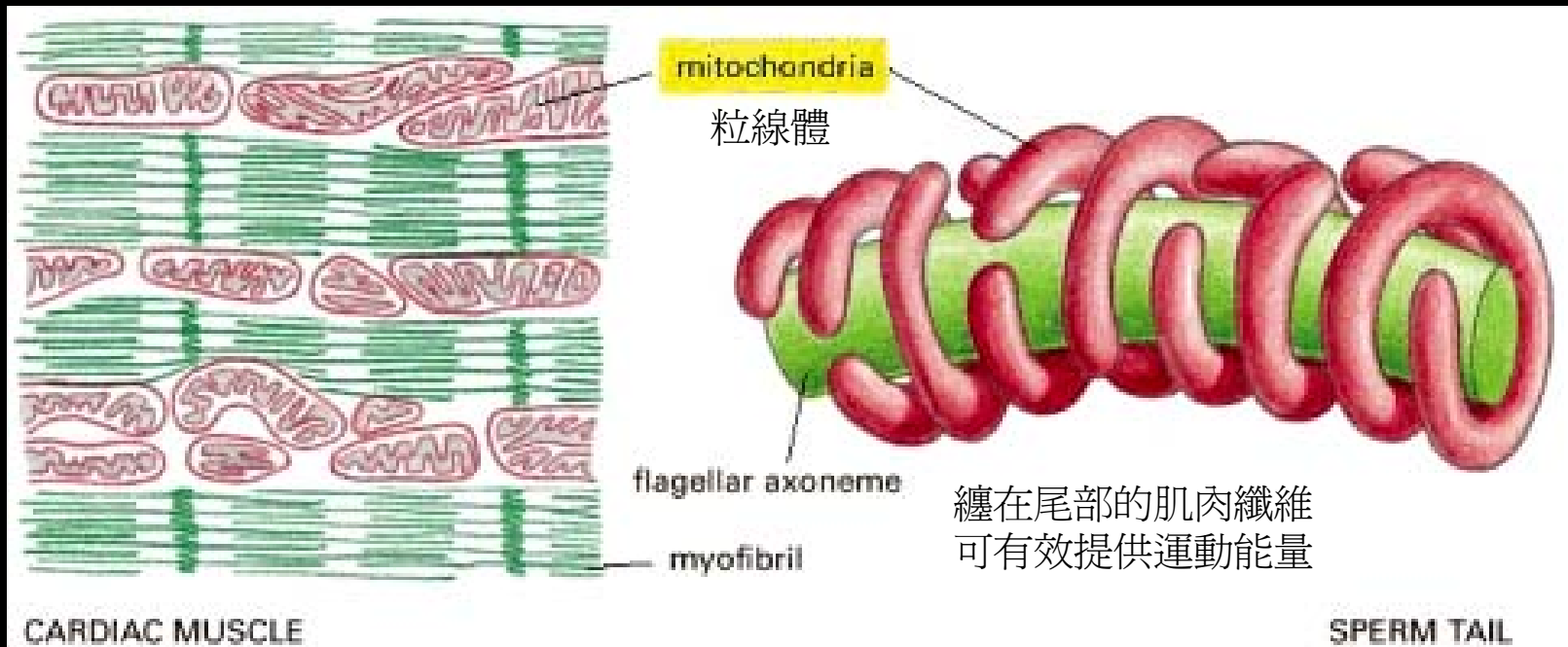


只有染色體 DNA 進入

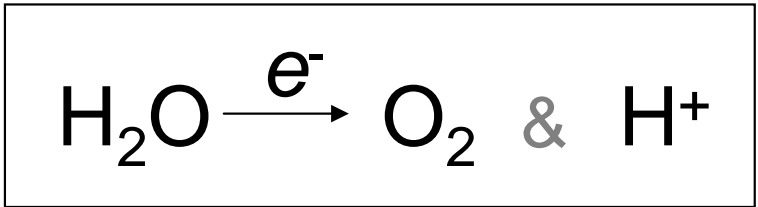
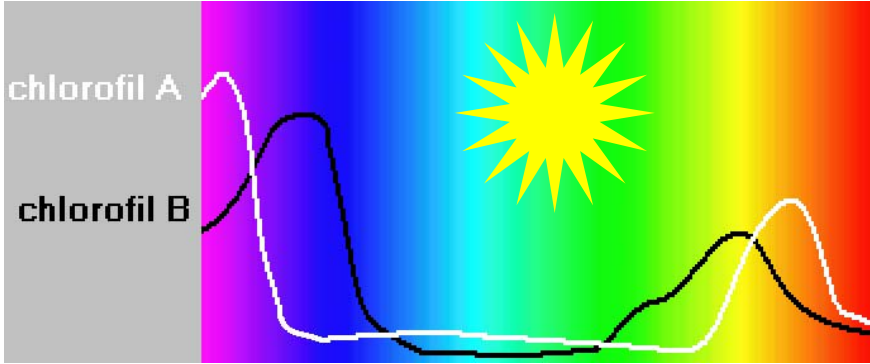


DNA從精子的頭部排出

粒線體呢？

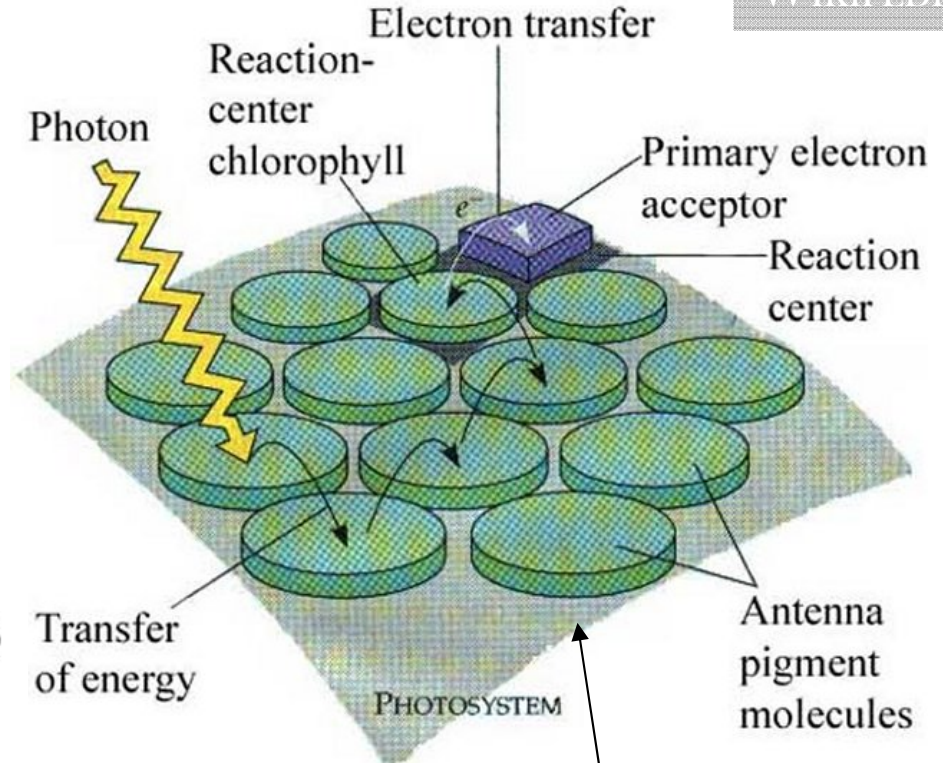
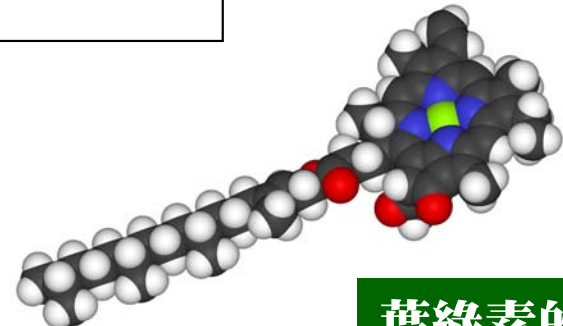


纏在尾部的肌肉纖維
可有效提供運動能量



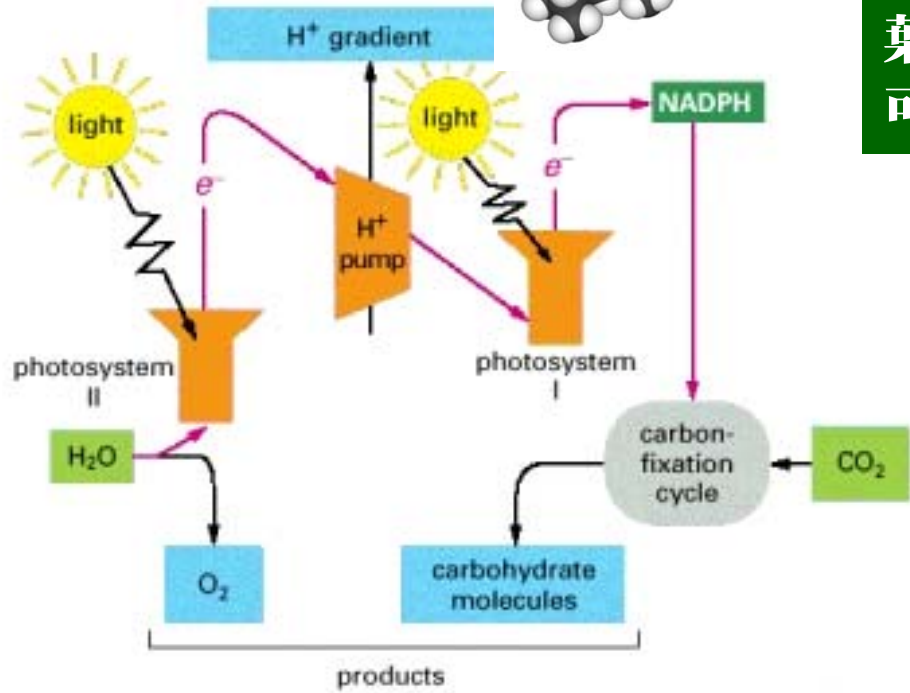
光能被吸收激發電子
最後分解水放出質子

葉綠素

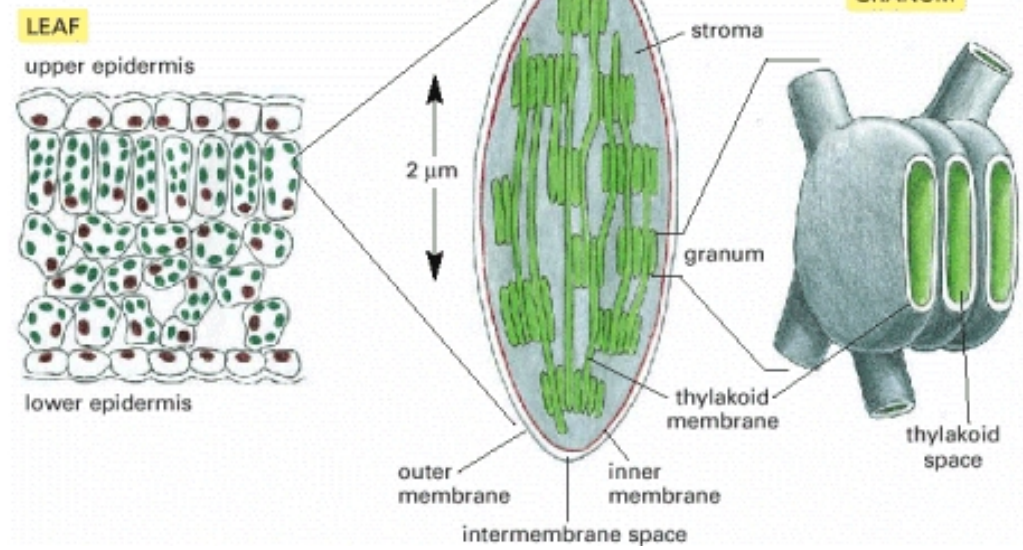


葉綠素的特殊構造
可吸收光能並轉移

(B) CHLOROPLAST



CHLOROPLAST 葉綠體



粒線體與葉綠體等胞器之演化族譜：

